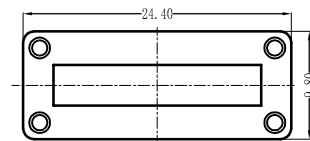
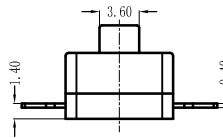
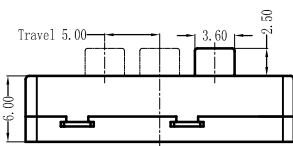
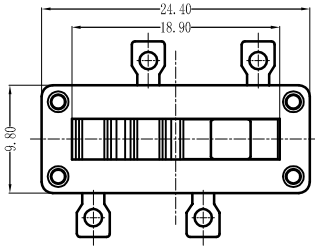
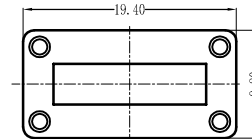
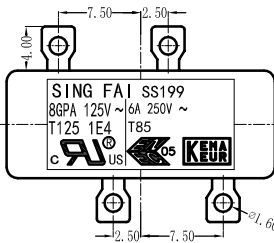


SS199 Series

 UL61058		
8GPA 125V a. c. 1E4 T125	6A 250V a. c. T85	

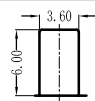
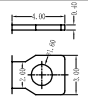
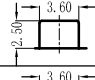
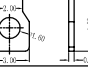


3 position



2 position

SS199 -12 -8 -2 -P

Function	Current	Knob Type	Terminal Type	
12 1P2T	6A 250V a. c. T85			
13 1P3T	8GPA 125V a. c.			
		2		
		3	