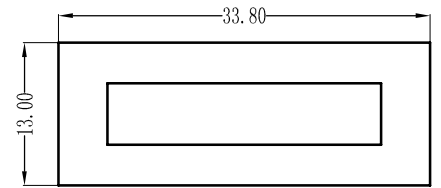
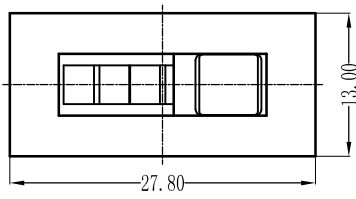


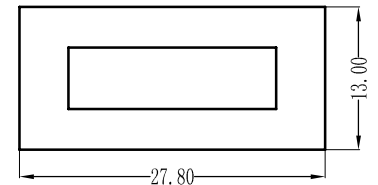
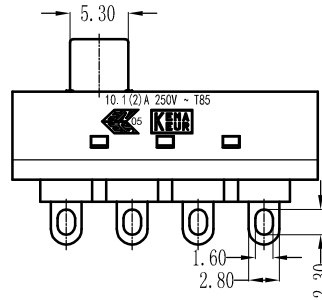
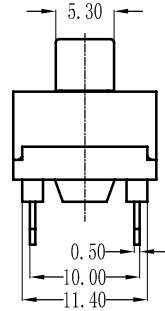
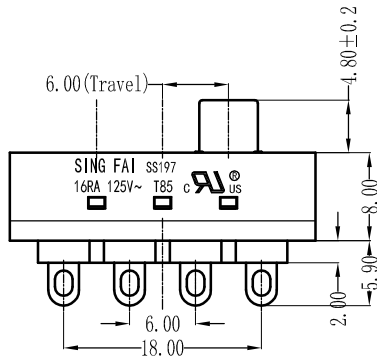
SS197 Series

Safety Approval & Specification

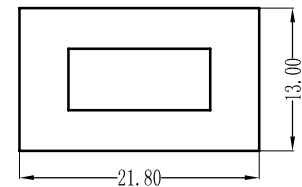
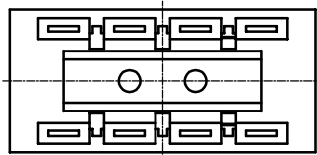
 UL61058	 KEMA	 CCC
16RA 125V a. c. T85	10.1(2)A 250V a. c. T85	



4 position

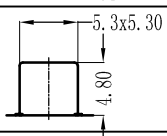
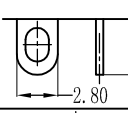


3 position



2 position

SS197 -23 -16 -A1 -S

Function	Current	Handle knob Type	Terminal Type
12 1P2T	16 16RA 125V a. c. T85 10(2)A 250V a. c.	A1 	S 
13 1P3T			
22 2P2T			
23 2P3T			
			P 