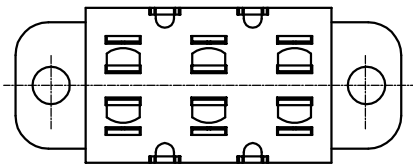
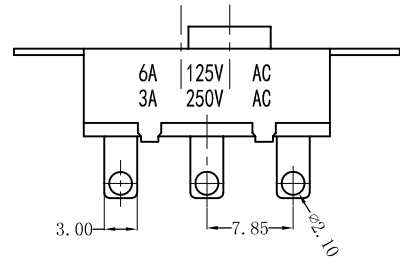
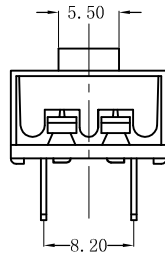
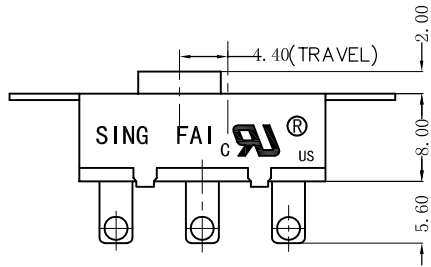
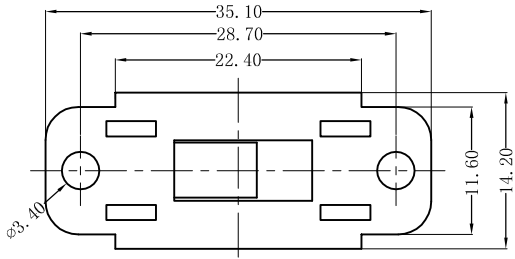


SS-XXXX-126D Series

Specification

 US UL1054		
6A 125V AC 3A 250V AC		



SS —

1	2	0	6
---	---	---	---

 — 126D — M — A4 — A1 — C/W

Circuit	Current	Terminal Display	Handle knob Type	Terminal Type	Metal Housing Type
12	06 6A 125V AC 3A 250V AC	M	A4	A1	C/W
22		None (Default)	A5	A2	F1
			A7	A3	F2
			A9	A4	
			B6	A5	
			C2		
			D1		