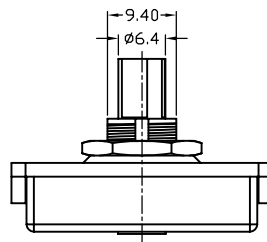
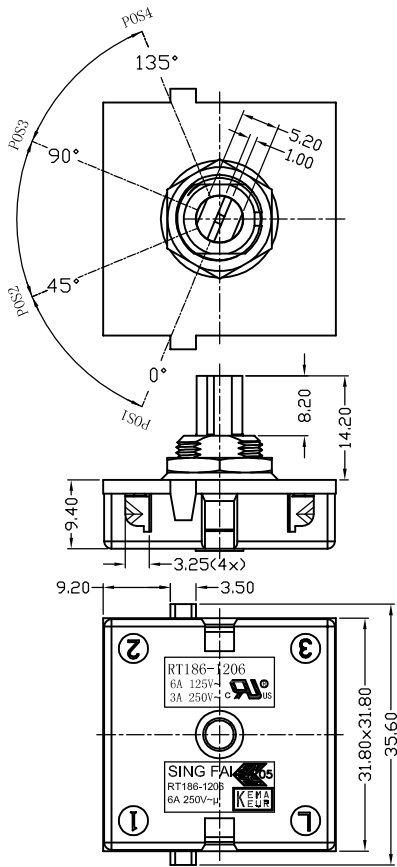


# RT186 Series

## Safety Approval & Specification

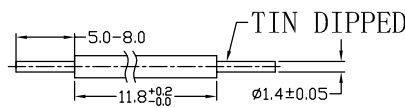
		
6A 125V a.c. 3A 250V a.c.		



### Notes:

- push-in terminals
- accept AWG18&20 stranded wire with tin dipped strip length 8.0mm max.

### Strip length:



## RT186

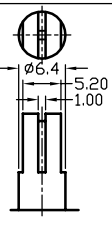
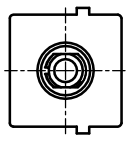
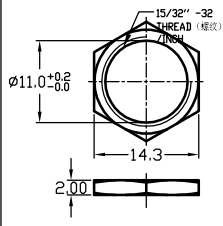
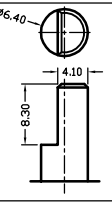
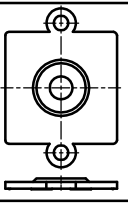
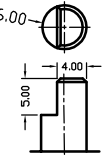
-14

-06

-A1

-C1

-N

NO	CIRCUIT DIAGRAM				Current	Actuator Type	Cover type	Nut type	
	POS1	POS2	POS3	POS4				0	N1
14		L+1+3	L+1+2	L+2+3	06 6A 125V a.c. 3A 250V a.c. 6A 250V a.c.	A1 	C1 	0	None
13	OFF	L+1+3	L+1+2					N1 	
12		L+1+3							
						A2 	C2 		
						A3 			
						A4 