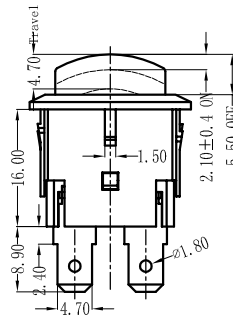
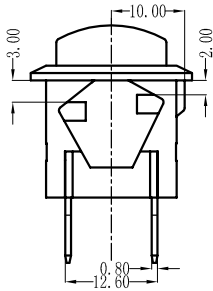
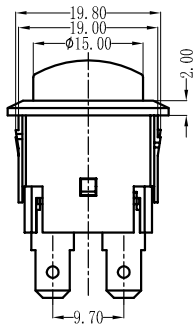
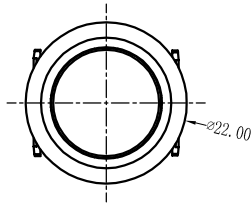


PS172 Series

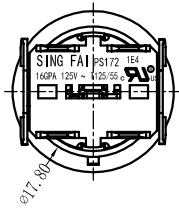
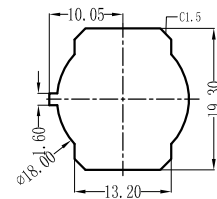
Safety Approval & Specification

UL61058			
16GPA 125V a.c.	T125/55 T85/55 1E4		
10GPA 125V a.c.			
6GPA 125V a.c.			



Suggested panel hole size

Panel thickness
2.0mm
3.0mm



PS172 -N -16 -A -1 -K -R -0 -0 -Q1

Function	Current	Housing Type	Button Type	Housing Color	Knob Color	Printing	Printing Color	Terminal Type	
A (ON-OFF w/lock (double poles))	16 16GPA 125V a.c.		1	K BLACK	K BLACK	0 NONE	0 None		
AI (ON-OFF w/lock (single pole))	10 10GPA 125V a.c.			R RED	DR DEEP RED		R RED		
D (ON-OFF (double poles))	6 6GPA 125V a.c.		2			OR ORANGE	M10		W WHITE
DI (ON-OFF (single pole))									
N (ON-OFF w/lamp)									
R (ON-OFF w/lamp)									