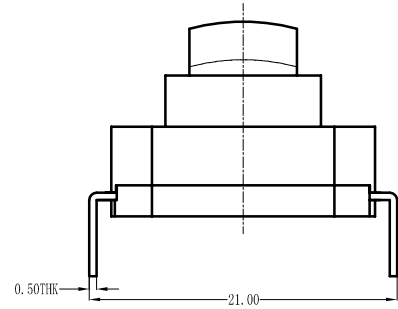
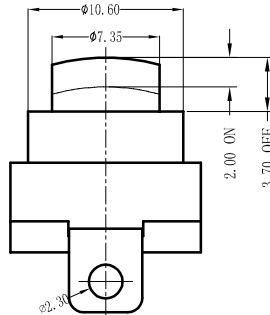
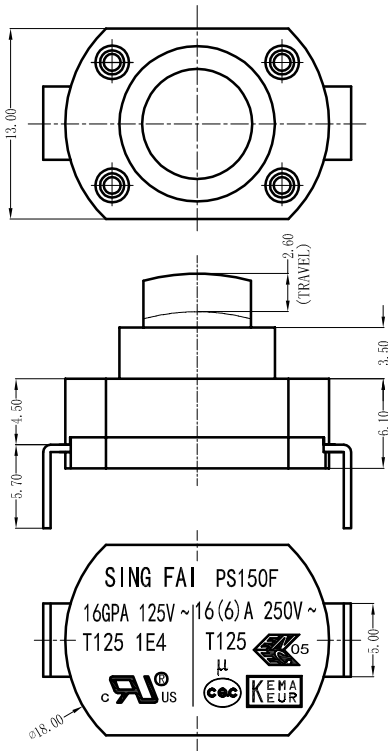


# PS150F Series

## Safety Approval & Specification

UL61058					
16GPA 125V a.c.	T125 T85 1E4	16(6)A 250VAC	T125	16(6)A 250VAC	T125
10GPA 125V a.c.		13A 125V AC	T80/55		
6GPA 125V a.c.		6.5A 250V AC			
1GPA 125V a.c.					



## PS150F -A -16 -GF -02 -09A

Function		Current	Material	Terminal Type	Knob Type
A	OFF-ON	16 16GPA 125V a.c. 16(6)A 250V a.c.	GF Glass Fibre	001	G0.8
D	(ON)-OFF Push ON		PA Polyamide		
E	(OFF)-ON Push OFF				
				003	G2.9
				004	G3.7
				006	G7.8
				P	G7.9
				09A	G8.0